



PN: ECC59SY



# Fitting Guide & Owners Manual

## CHEVROLET SILVERADO

### 01/2022 on

Single Hoop / Channel Only Bar  
VEHICLE FRONTAL PROTECTION SYSTEM (VFPS)  
FOR AIR BAG & ADR COMPLIANT VEHICLES

# Index

---

## Pages 3-5

ECB's Benefits  
Product Care

## Pages 6-7

Stage 1 - Vehicle Testing and Preparation  
Stage 2 - Grille cover  
Stage 3 - Grille  
Stage 4 - Inner wheel arch  
Stage 5 - Flares / headlight panel  
Stage 6 - Camera harness / grill

## Pages 8-9

Stage 7 - Sensor harness  
Stage 8 - Inner bumper support  
Stage 9 - Bumper removal  
Stage 10 - Recovery hooks  
Stage 11 - Lower shutter  
Stage 12 - Chassis support brackets

## Pages 10-11

Stage 13 - Remove camera  
Stage 14 - Parking sensors/harness  
Stage 15 - Camera fitment  
Stage 16 - Harness/sensor fitment  
Stage 17 - Under light guards  
Stage 18 - Trim outer guards

## Pages 12-13

Stage 19 - Refit grille and bumper  
Stage 20 - Fit winch frame  
Stage 21 to 22 - Lower shutter fitment  
Stage 23 - Winch fitment  
Stage 24 - protection bar fitment

## Pages 14-15

Stage 25 - Connect camera/  
parking sensors  
Stage 26 - Trim inner guards  
Stage 27 - Number plate bracket/  
Safety checks

## Pages 16-17

Final Checks  
Installation kit

## Pages 18-19

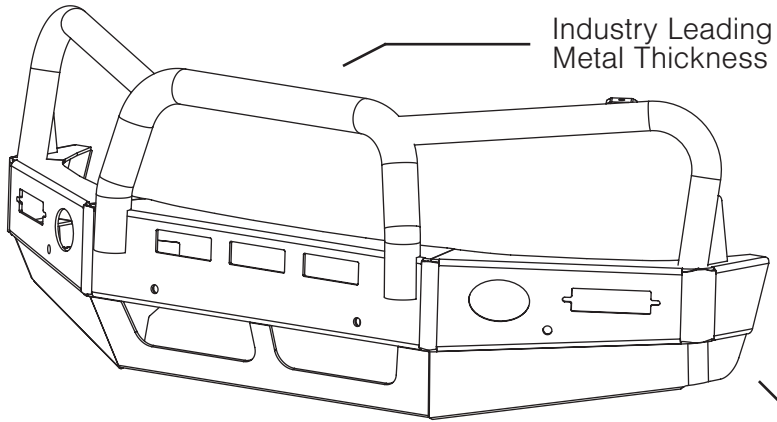
Finished product

## Pages 20-21

Notes  
Warranty registration

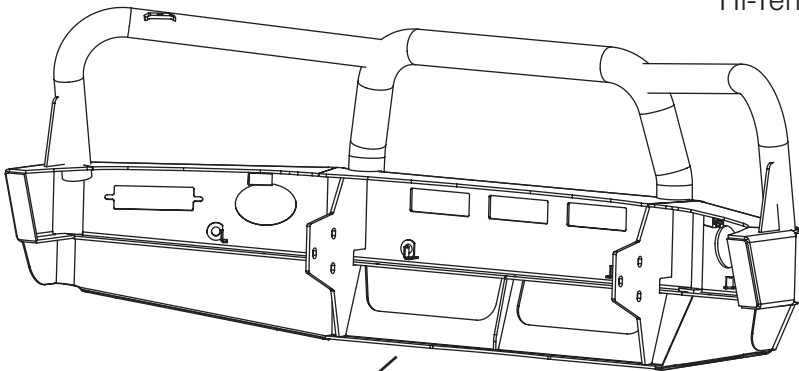
# The Features of ECB

---



Industry Leading  
Metal Thickness

6mm Thick  
Hi-Tensile Alloy



Unmatched  
Strength

Fully Welded  
Construction

# ECB's Benefits

---

## **Built to Perform - Not to a Price**

ECB are proud to claim that their channels are not jigsaw puzzles that are bolted together, or even multiple sections welded together. Where any welding is required, it is done to the highest standards by qualified welders, not machines.

## **Anti-Corrosive Nature of Alloy**

The composition of ECB's alloy has a very high resistance to corrosion. Rust not only looks unappealing but greatly reduces the strength of the metal. Rust can and will weaken the structural integrity of a steel Bullbar effectively rendering it useless over time.

## **Australian Made**

Established in 1971, we utilise decades of experience designing, engineering and building products in Australia to suit Australian conditions. We can ensure the best quality controls and help support the local economy and employ over 90 proud Australians.

## **Weight Saving Benefits**

An ECB alloy Bullbar is typically half the weight of a steel Bullbar. Unnecessary suspension upgrades are not required. The reduced weight also contributes to increased fuel economy and less wear and tear on tyres, suspension and braking components.

## **Welds That Work**

ECB uses only the strongest welds and welding techniques to ensure every product is as structurally sound as possible. MIG (Metal Inert Gas) welding techniques are employed ensuring the welds are as thick as the thickest section of alloy's being joined together.

## **Lifetime Warranty**

ECB provide a lifetime warranty and consumer guarantee on all of our manufactured products. This guarantee highlights the confidence in our ability and provides complete peace of mind for your purchase for the lifetime you own your vehicle.

# Product Care

---

## Polished Products

Being a premium mirror polished finish, regular maintenance will be required to keep that iconic ECB shine. We recommend using our own brand of Aluminium Polish. This formula has been tried and tested and in our opinion is the world's best standard.

**Directions:** Apply a small quantity of Aluminium Polish to a clean soft cloth and rub the metal surface. The longer the rubbing the brighter the surface becomes. Wipe off Aluminium Polish with clean soft cloth. Also suitable for motorised buffing machines.

**Note:** There are more specific details on the polish bottle. Please read before use.

## Powder Coated Products

Our powder coated finishes are very low maintenance. In fact there is actually very little you will ever need to do for this product. Just clean it as you would your car and it will stay looking good as new.

## ECB Aluminium Polish

When you're looking for that showroom finish look for your polished automotive products, you can depend on the no compromise quality of East Coast Bullbars Aluminium Polish. This specifically designed product is the best polish available and we guarantee that this \$#!+ works. Within our decades of manufacturing polished alloy products we have trialed a large range of different polishes on the market and believe without a doubt that nothing beats the finish quality of East Coast Bullbars Aluminium Polish.

East Coast Bullbars Aluminium Polish is excellent for use by hand and is ideal for polished Bullbars, nudge bar and stainless steel products. This polish will clean, polish and protect your product from the elements whilst bringing your products back to that showroom finish look.



# ECC59SY

## Stage 1

- Test drive vehicle to ensure all driver assist features are correctly working and to gauge effectiveness. Park on a flat level surface.
- Apply parking brake and lift bonnet.
- Unwrap ECB Protection bar and disconnect mounts. Discard bolts.
- Ensure these instructions are left with the vehicle owner and/or operator.



## DISCONNECT BATTERY.

## Stage 2

- From between headlights, remove nine (9) plastic push pull clips from radiator cover.
- Remove bonnet latch two (2) T15 Torx screws.



## Stage 3

- Remove four (4) 10mm head bolts from top of grille.



# Chevrolet Silverado 2500

## Stage 4

- Inner wheel arch remove four (4) T15 Torx screws.
- Pull inner wheel arch from behind end of bumper.



## Stage 5

- Gently pull flares away from guard
- Remove one (1) 7mm head screw (per side) from behind flare.
- Pull light trim away from guard then forward around light to remove.



## Stage 6

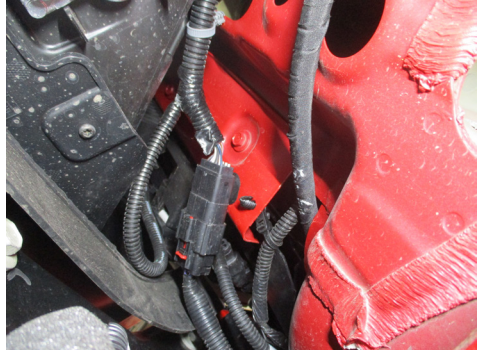
- Disconnect camera harness on passenger side.
- Remove two (2) 10mm head bolts at bottom of grille.
- Pull grille forward to release clips from radiator support.
- Remove grille.



# ECC59SY

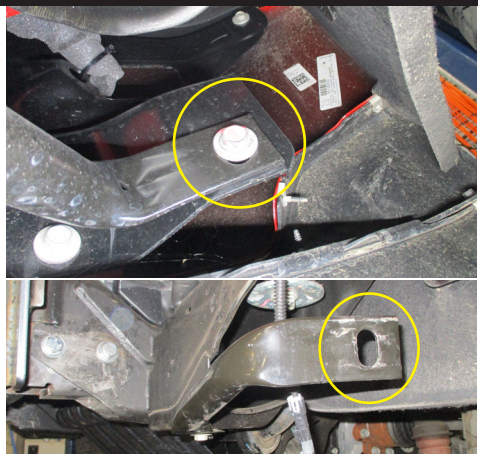
## Stage 7

- On passenger side, disconnect parking sensor harness connecting bumper to vehicle.



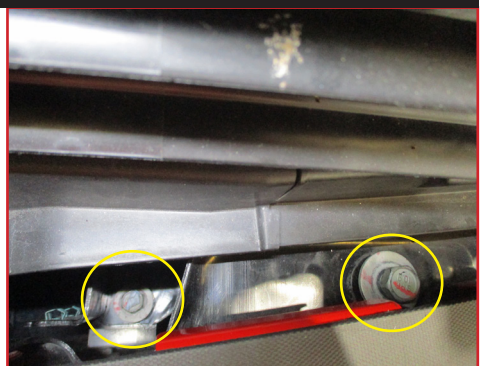
## Stage 8

- Behind inner guard, remove one (1) 15mm head bolt from bumper wing (per side).
- Underside of bumper, remove bumper support, one (1) 18mm head bolt (per side), two (2) 15mm head bolts from underside.



## Stage 9

- In grille opening, remove two (2) 18mm head bolts (per side) from bumper mount to vehicle. These are accessed from the top.
- Gently remove bumper.

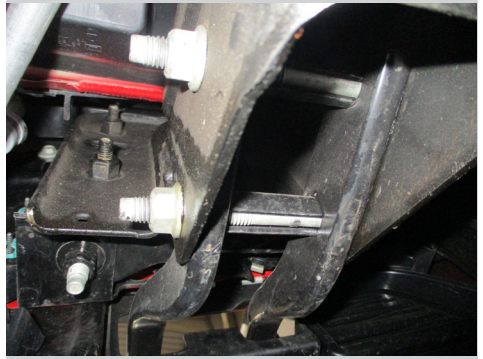




# Chevrolet Silverado 2500

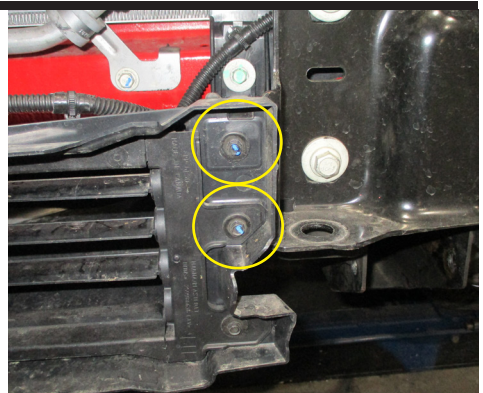
## Stage 10

- Remove recovery hooks, two (2) 18mm head bolts per side.
- Remove hooks.



## Stage 11

- Unplug lower shutter and remove, four (4) 7mm head screws.



## Stage 12

- Remove front support brackets, four (4) 15mm head bolts (per side).
- Retain bolts for refitment.



# ECC59SY

## Stage 13

- Remove camera from grille, two (2) torx screws.
- Unclip harness from grille and move harness to half way down grille. Feed through grille for connection into protection bar.
- Resecure harness back to rear of grille.



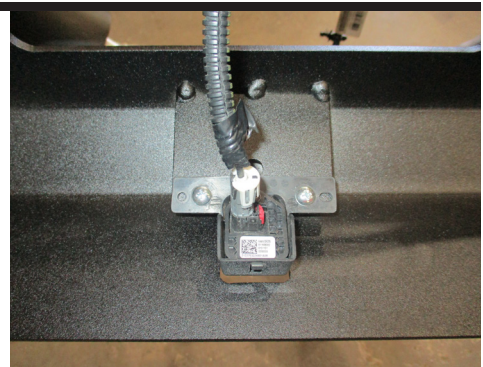
## Stage 14

- Remove inner bumper supports to gain access to sensors.
- Remove sensors and harness from bumper.
- Take note of direction of sensors as they are directional.



## Stage 15

- Place camera into protection bar.
- Secure with M5 x 20mm pan head screws, flat washers and nyloc nuts.



# Chevrolet Silverado 2500

## Stage 16

- Install sensors into sensor housing same direction as removed from bumper.
- Secure sensors with zip ties, do not over tighten.
- Place sensor harness into protection bar. Connect to sensors and attach to protection bar using zip ties supplied.



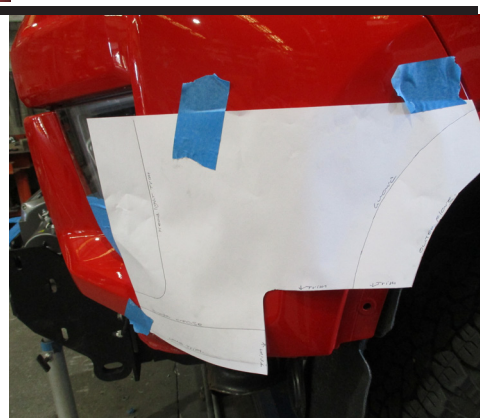
## Stage 17

- Fit guards under headlights using M6 x 25mm bolts, flat washers and nyloc nuts.
- When fitting plate to inner guard, use 5/16 x 11/4 flat washer to the outside of inner guard.



## Stage 18

- For outer light trims, using template provided, trim guards using jig saw or similar.
- Use protective tape to avoid any damage.
- Double check against template before trimming.
- Check scale as photocopiers may vary.



# ECC59SY

---

## Stage 19

- Refit grille, outer light trims and top of radiator cover in reverse of steps above.

---

## Stage 20

- Fit steel winch mount to front of chassis rail, using original bolts, do not fit lower inner bolt at this stage.
- Underside of mount, secure with M12 x 120mm bolts, flat washers, spring washers and nuts.
- Align mount and tighten all bolts.



---

## Stage 21

- Fit mounting brackets to lower shutter cover using M6 x 25mm bolts, flat washers and nyloc nuts.



# Chevrolet Silverado 2500

## Stage 22

- Fit shutter and cover to underside of winch mount, two (2) side holes use M8 x 1.5 x 30mm bolts, flat washers, and nyloc nuts.
- For top, use M6 x 25mm bolts, flat washers and nyloc nuts.
- Align and tighten all bolts.

NOTE: The front of the shutter will need to be trimmed to fit inside the alloy cover. Neatly trim to suit your vehicle.



## Stage 23

- Fit winch to winch frame as per manufacturers instructions.

NOTE: Control box mount has been supplied to suit some Warn winches.



## Stage 24

- Fit protection bar to vehicle, M12 x 1.75 x 40mm bolts, flat washers, spring washers and nuts.
- Align protection bar and tighten all bolts.
- If centre fitting tube to protection bar fit now, two (2) rubber gasket washers, two (2) M10 x 1.5 x 40mm bolts, flat washers and spring washers.
- Align tube with protection bar and tighten bolts.

NOTE: Inner arrow on rubber gasket to front and circular cut to inside. Align to best suit your vehicle.



# ECC59SY

## Stage 25

- Connect camera and parking sensors.
- Secure excess harness to vehicle.



## Stage 26

- Trim inner guards.



## Stage 27

- Hold number plate bracket in position, mark and drill 6mm mounting holes into protection bar.
- Install number plate bracket onto front of protection bar using two (2) M5 x 20 screws, flat washers and nyloc nuts. Align and tighten all screws
- Test all safety features are working correctly.



# Final Checks

---

## Ensure Number Plate is Clearly Visible

Note: When fitting/refitting the licence plate to the vehicle, ensure there is no obstruction to licence plate vision in accordance with local authorities. If required relocate licence plate to an alternate location.

## Further VFPS Notes

1. Do not attach VFPS to the vehicle using anchorages not intended for this purpose (e.g. engine mounting bolts).
2. Do not use this product for any vehicle make or model, other than those specified by the VFPS manufacturer.
3. Do not remove the plaque or label from the VFPS.
4. Do not modify the structure of the VFPS in any way.
5. No accessory or fitment should project forward of the VFPS forward profile.
6. **Ensure these instructions are left with the vehicle owner and/or operator.**

## Important Information

Periodically check bolts and nuts for correct tightness, especially if traveling on rough roads.

# Installation Kit

---

## Installation Kit

1 - Winch mount	2 - M8 x 1.5 nyloc nuts
1 - Control box mount	2 - M8 x 1.5 x 30mm bolts
1 - Pair lower cooler support mounts	4 - M8 flat washers
1 - Lower cooler protection cover	2 - M8 Nyloc nuts
1 - Pair headlight Guards	12 - M6 x 25mm bolts
1 - Number plate bracket G	2 - M6 x 16mm bolts
1 - Number plate bracket H	26 - M6 flat washers
4 - M12 x 1.75 x 120mm bolts	14 - M6 nyloc nuts
6 - M12 x 1.75 x 40mm bolts	2 - 5/16 x 1 1/4 flat washers
20 - M12 flat washers	4 - M5 x 20mm pan head screw
10 - M12 spring washers	8 - M5 flat washers
10 - M12 x 1.75 nuts	4 - M5 nyloc nuts
2 - M10 x 1.5 x 40mm bolts	4 - 300mm zip ties
2 - M10 flat washers	10 - 150mm zip ties
2 - M10 spring washers	2 - Rubber tube gaskets



# Finished Product

---



# Warranty Registration

---

## Contact Details

Name: \_\_\_\_\_

Address: \_\_\_\_\_

Product: **ECC59SY**

Email: \_\_\_\_\_

Phone: \_\_\_\_\_

Work Order Number: \_\_\_\_\_

You can find this on the silver label  
of your ECB product.

By submitting this registration you automatically subscribe to ECB's mail outs.  
You can unsubscribe at any time.

## Register Online

For online registration please go online to [www.ecb.com.au/warranty-registration](http://www.ecb.com.au/warranty-registration)  
If you have any questions please contact our national office on 1800 069 145 or  
[www.ecb.com.au](http://www.ecb.com.au).

## Or Post To:

PO Box 122, Margate, QLD 4019

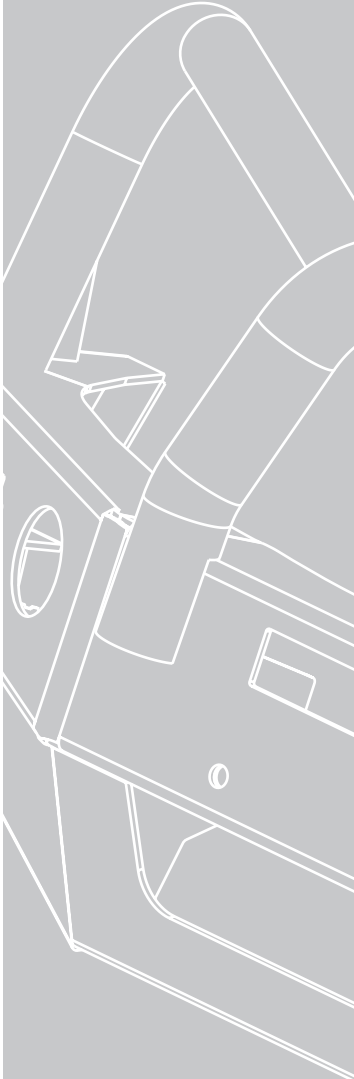


**PN: P2F59SY**

**Please post to: PO Box 122,  
Margate QLD 4019**



REPLACES: N/A  
REVISED: 28.09.23



# **Safer Lighter Stronger**

1800 069 145  
[www.ecb.com.au](http://www.ecb.com.au)

29 Snook St, Clontarf QLD 4019  
PO Box 122, Margate QLD 4019